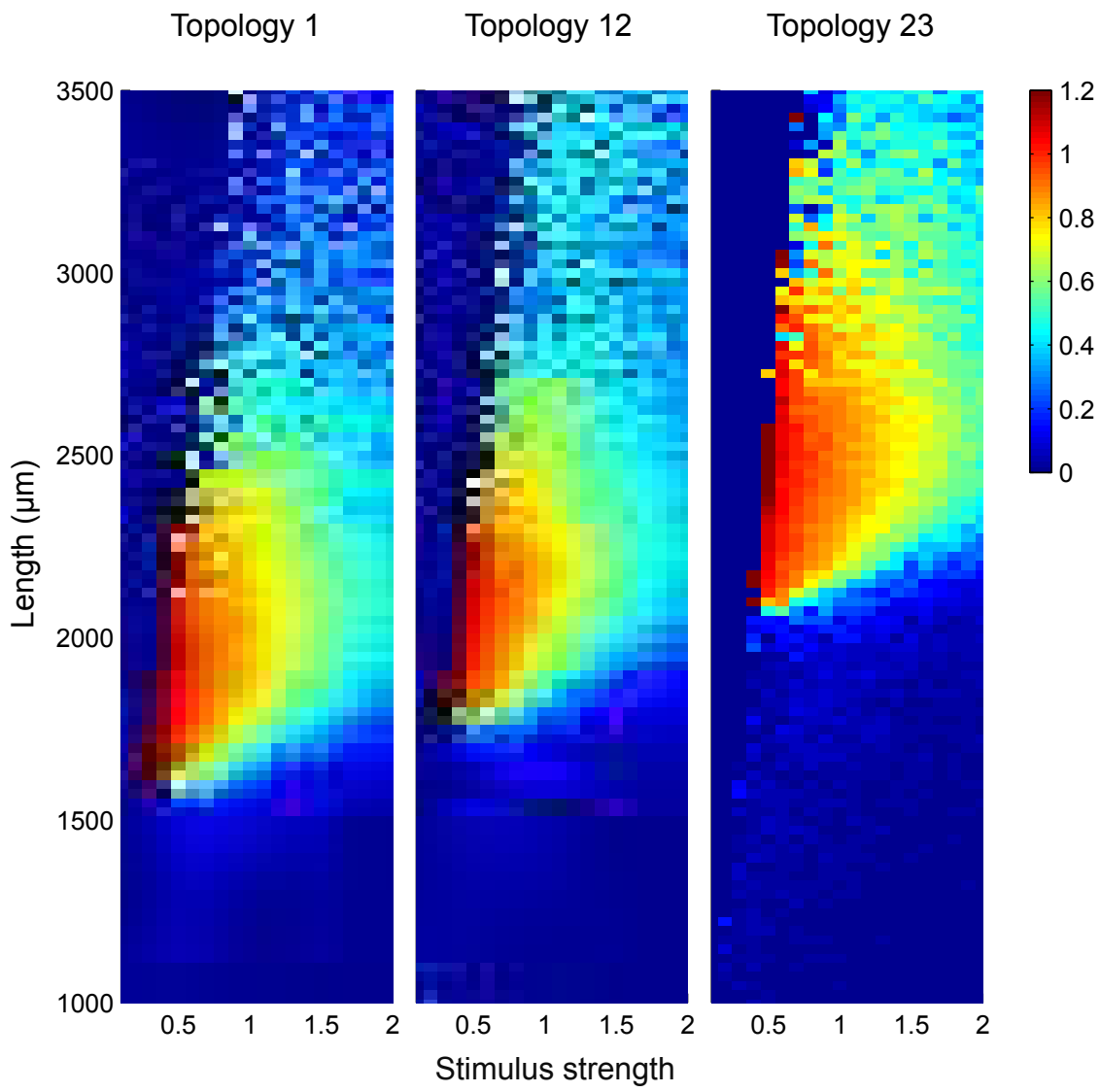
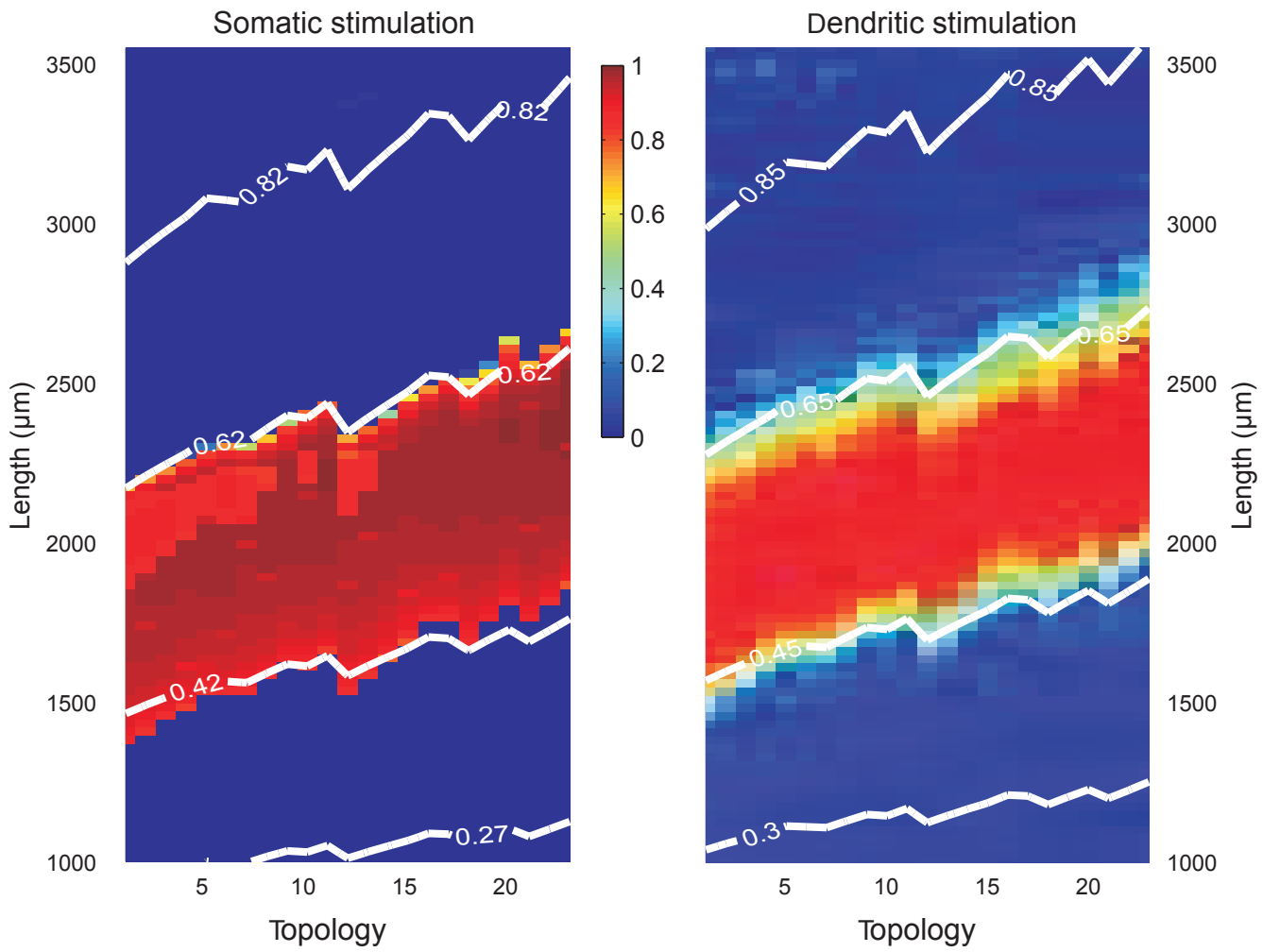


van Elburg and van Ooyen, Supplementary Figure 1

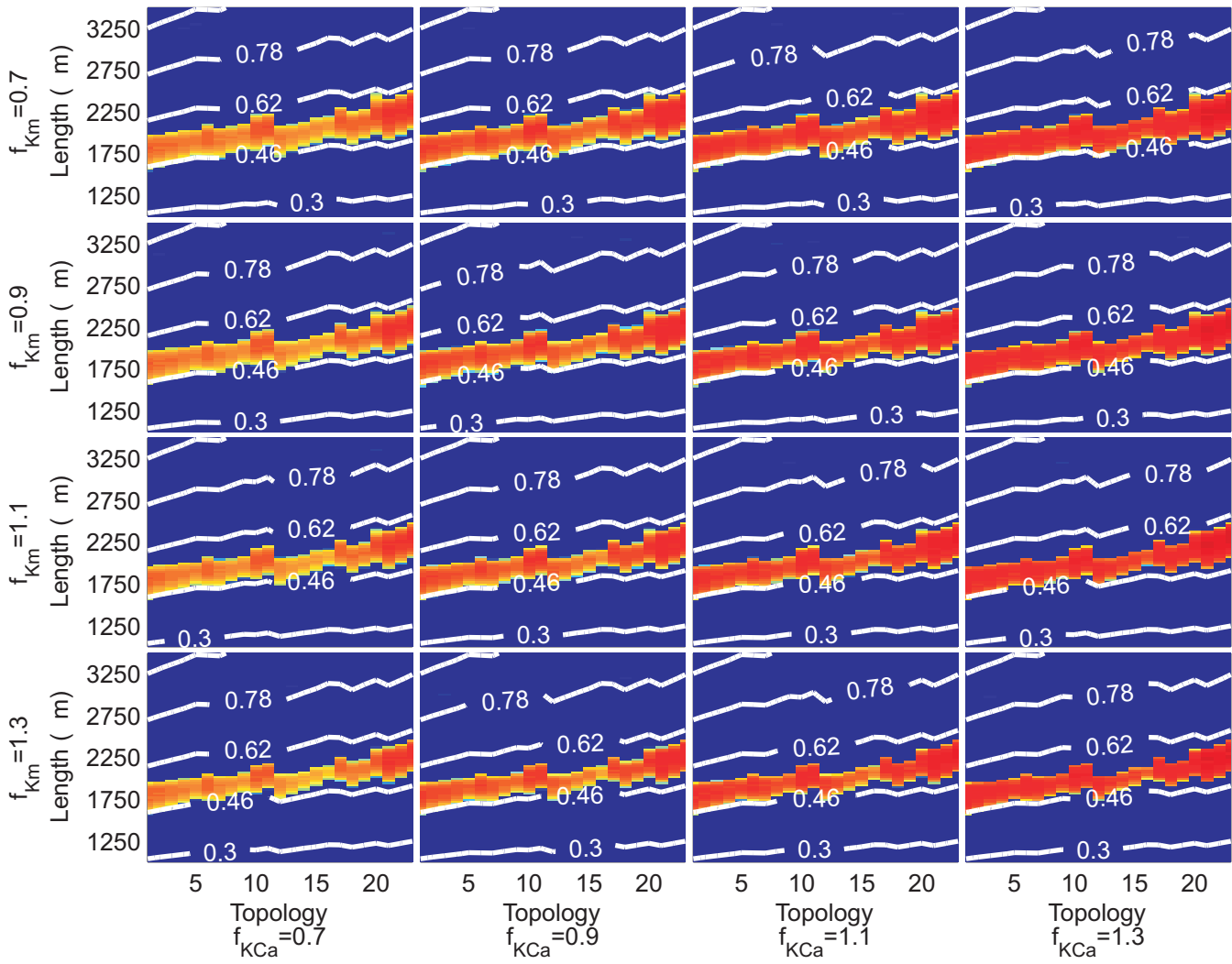


van Elburg and van Ooyen, Supplementary Figure 2



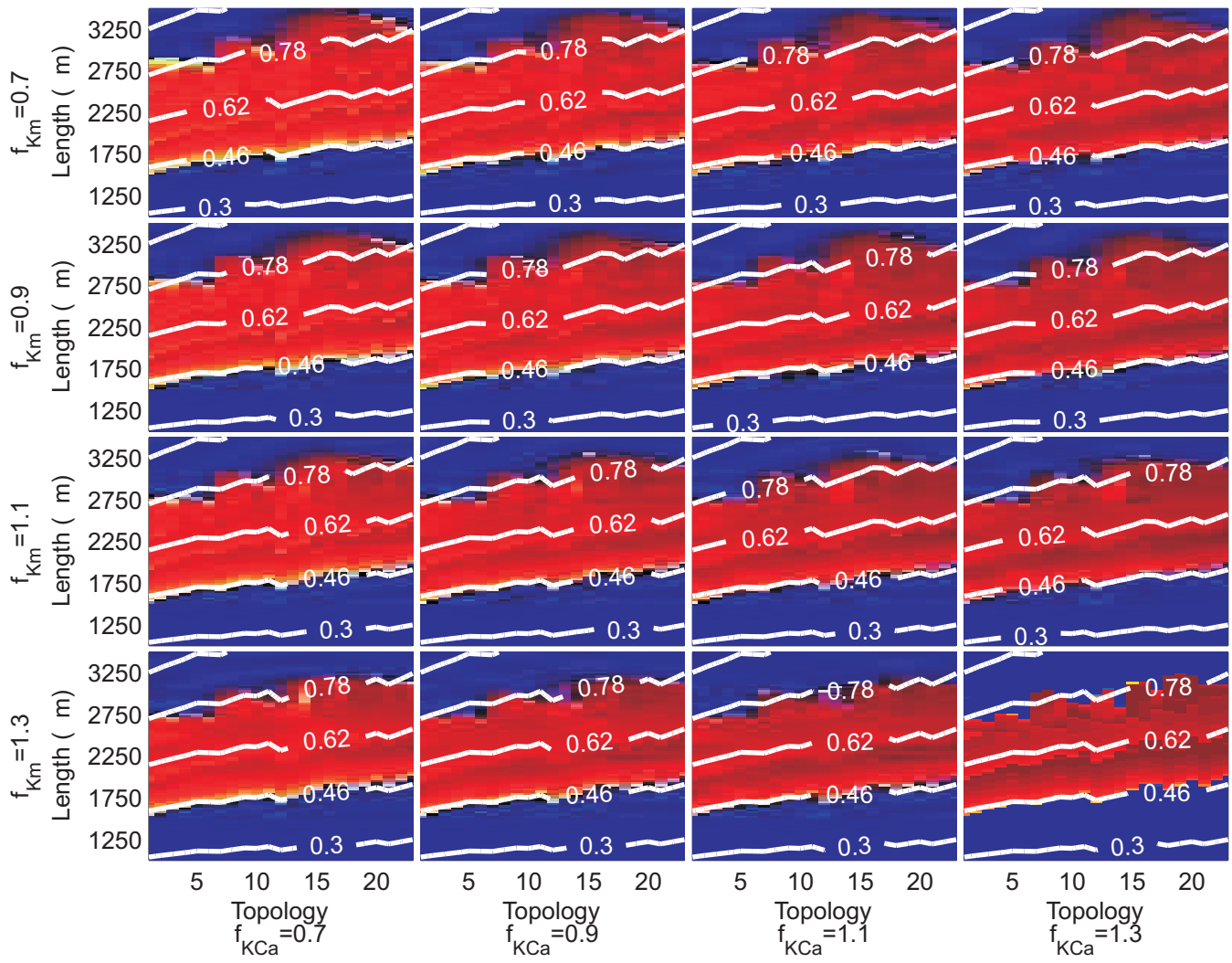
van Elburg and van Ooyen, Suppl. Figure S3.

GKCa vs GKm scan with 90 percent of the original Na ionchannels

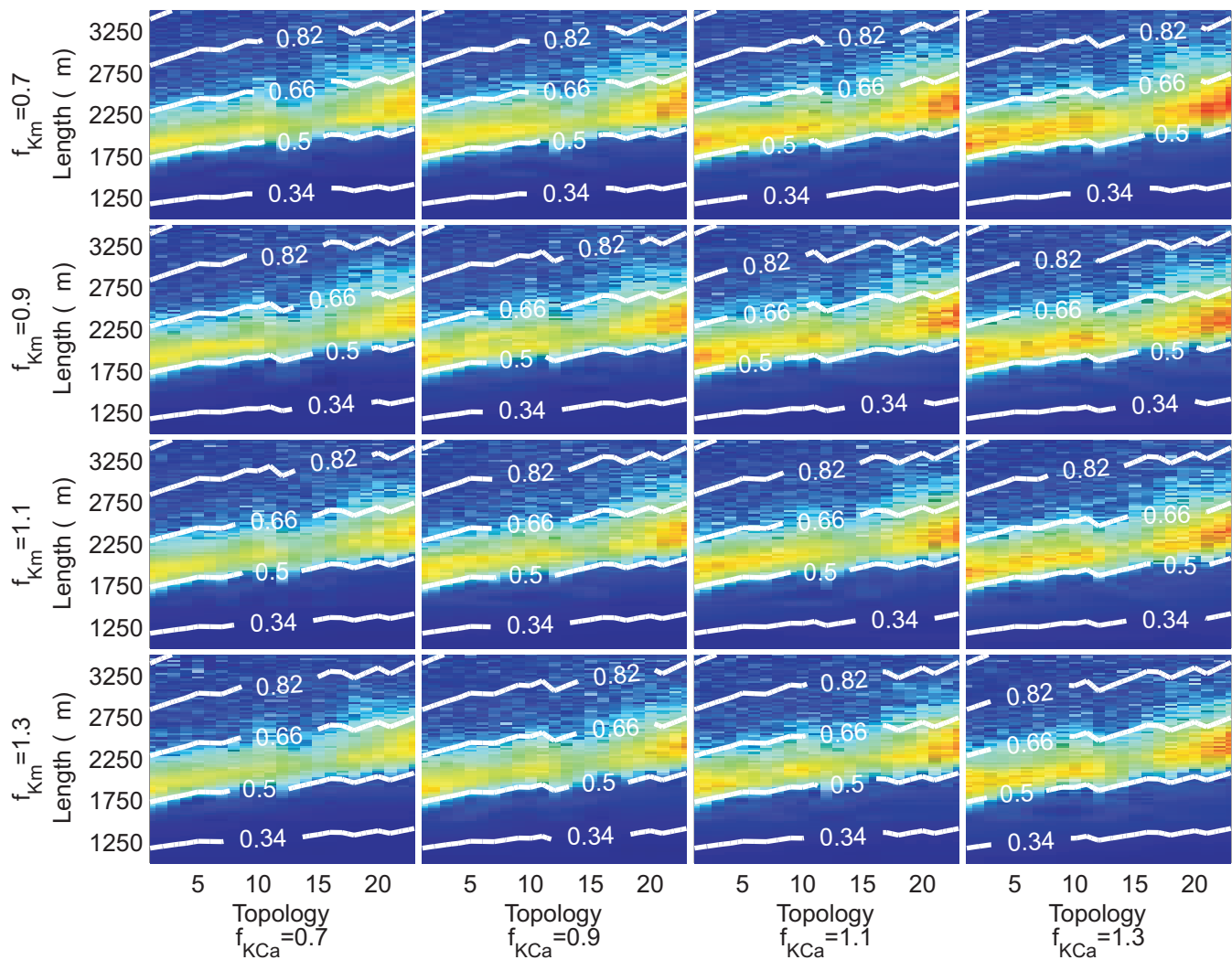


van Elburg and van Ooyen, Suppl. Figure S4.

GKCa vs GKm scan with 110 percent of the original Na ionchannels

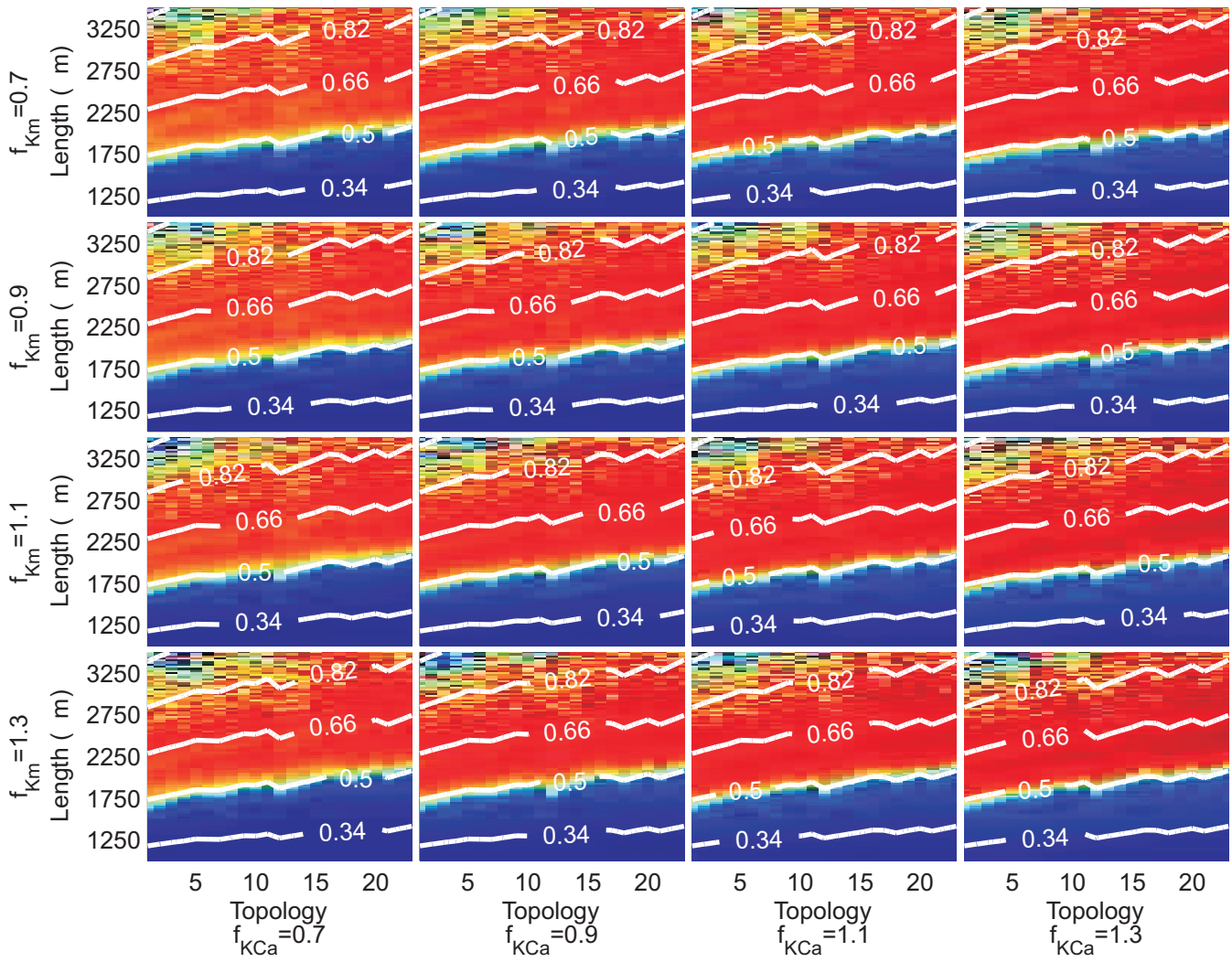


van Elburg and van Ooyen, Suppl. Figure S5.

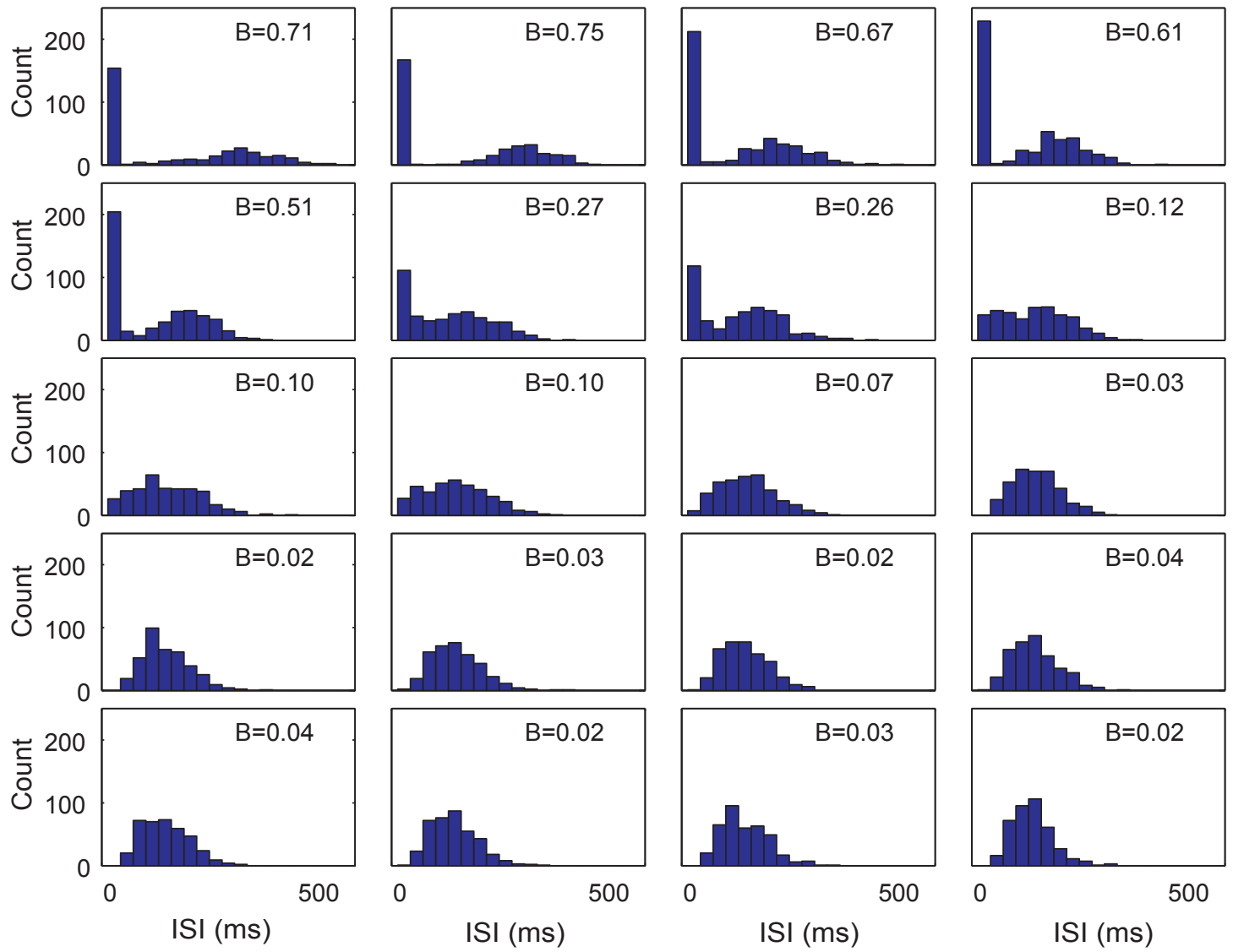


van Elburg and van Ooyen, Suppl. Figure S6.

GKCa vs GKm scan with 110 percent of the original Na ionchannels



van Elburg and van Ooyen, Suppl. Figure S7.



van Elburg and van Ooyen, Suppl. Figure S8.